

**Lucía C. Pino**

***Non-Slave Tenderness***

01/19/18 – 03/11/18

Inauguration: Thursday, January 18, 2018, at 7 p.m.

***The Possibility of an Island***

Exhibition Program at Espai 13 at Fundació Joan Miró

September 22, 2017 – September 11, 2018

Curator: Alexandra Laudo [Heroínas de la Cultura]

In collaboration with Fundació Banc Sabadell

---

**Press Release**

---

**Lucía C. Pino constructs a futuristic island where waste materials and organic elements symbiotically entwined.**

***Non-Slave Tenderness* is an experimental sculptural project in which tubes, glass, light, sounds, space, and people are freed from the hierarchies that usually bind them and relate to each other in new ways.**

**Echoing works of science fiction and theoretical research, the artist transforms the Fundació Joan Miró's Espai 13 into an imagined insular landscape, made up of compact sediments, in which to experimentally rewrite our links to matter.**

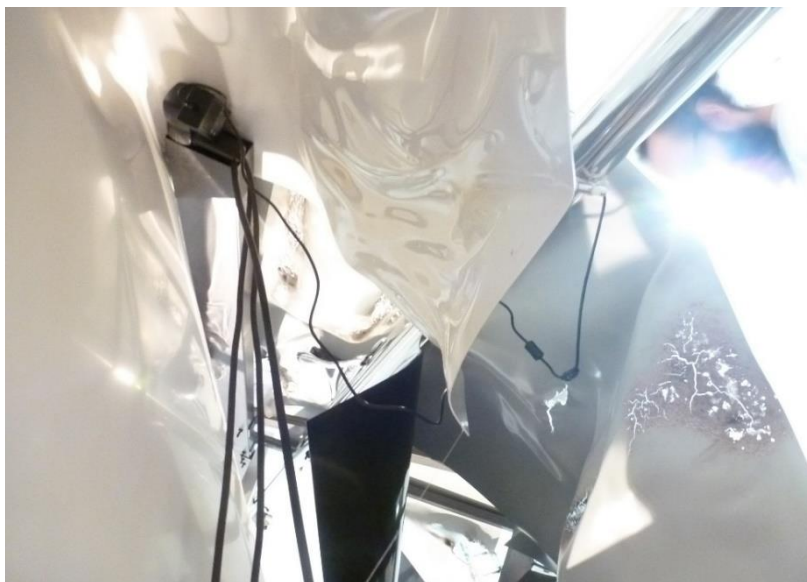
**It is the third show in *The Possibility of an Island*, the exhibition program for the 2017-2018 season at Fundació Joan Miró's Espai 13, organized in collaboration with Fundació Banc Sabadell. Curated by Alexandra Laudo, the project explores some of the symbolic and sociocultural meanings that have historically been associated with a paradigmatic space in the collective imaginary: the island.**

**Barcelona, January 18, 2018.** The work of Lucía C. Pino (Valencia, 1977) often involves a wide-ranging practice of sculptural research that examines materials, people, spaces, the nature of the ties between them, and the ambiguous boundaries that set them apart. Her projects are based on the desire to build something from the utterly accessible, the mundane, even from waste. It is a proposal that identifies precariousness and fragility as valid conditions from which to formulate possible new narratives, putting the focus on materials, considering both their physical characteristics and the symbolic value of the memory they preserve.

For The Possibility of an Island, Lucía C. Pino presents Non-Slave Tenderness, a sculptural environment intentionally isolated from the usual contrast between the natural and the artificial to enable an emotional encounter with the material.

Upon going down to Espai 13, visitors enter a science-fiction landscape suggestive of a leap into the future, beyond the Anthropocene, the age of man, to the end of the era characterized by the massive impact of human activity on Earth. The artist marks this voyage with a sculptural threshold placed just before the final flight of stairs, consisting of a steel support coupled to a fluorescent light.

Like the massive patches of plastic debris that float in today's oceans forming vast islands, this speculative territory is a conglomeration of sediments from an imagined sea, materials that, perhaps due to the action of the waves, have been compacted and melded with the environment to become a large hybrid object. The layout of the eight sculptures of varying sizes that inhabit this space – spread over the floor of the room like interconnected bodies in a new ecosystem – together with the atmosphere – dimly lit and enshrouded with a subtle fog that enhances the interplay between what can be seen and what can only be intuited – invite the viewer to slow down, proceed carefully, and adopt an attitude of contemplative exploration.



On this futuristic island, Lucía C. Pino investigates a personal ecology, in which toxic and waste elements have merged with biotic ones to form an inseparable whole. The cables, light, glass, fog, space, sounds, water, and people transcend the relationships of hierarchy and subordination by which they are usually organized to prefigure a system of human and non-human interactions based on correlation and equality, even on tenderness and care.

**Lucía C. Pino** (Valencia, 1977) holds a degree in audiovisual communication from the University of Valencia and studied common arts at the Valencia School of Art and Design (EASD). She has participated in numerous group exhibitions, including *Enésima Intempestiva* (Àngels Barcelona, espai 2), *La lliçó de Diògenes* (Tecla Sala, L'Hospitalet), *No Song to Sing* (ADN Platform, Sant Cugat), and *Are You Ready for TV?* (MACBA, Barcelona). She has also had solo shows at the gallery Ana Mas Projects (L'Hospitalet) and as part of the *Absolutament Moder(rr)ns* series by the Architects' Association of Catalonia (COAC). Her recent solo shows include *Derby Bakora* (EtHall, Barcelona) and *Torrent Echidna Attractor*, at Arts Santa Mònica, as part of the program *The more we know about them, the stranger they become*. She is the recipient of grants from Centre d'Art La Rectoria and Nau Còclea and has won awards such as first prize at the Inund'ART Festival (Casa de Cultura de Girona). She is the author of the publications *Fata Morgana* and *Gramática Parda*, among others. She currently lives and works in Barcelona. [www.luciapino.com](http://www.luciapino.com)

***The Possibility of an Island*** is the exhibition program for the 2017-2018 season at Fundació Joan Miró's Espai 13, organized in collaboration with Fundació Banc Sabadell. Curated by Alexandra Laudo, the project explores some of the symbolic and sociocultural meanings that have historically been associated with a paradigmatic space in the collective imaginary: the island. An island is a symbol of independence and self-sufficiency, but it can also be a place of segregation and confinement. It can evoke images of paradise, but also of self-contained tourist resorts. Historically, islands have been objects of colonial power, but also places for social and political utopias. Above all, an island is a metaphor for a state of solitude, retreat and introspection. Gerard Ortín, Irene de Andrés, Lucía C. Pino, Bárbara Sánchez and Gideonsson / Londré probe some of these meanings using a variety of approaches and perspectives with the aim of raising questions and reflections about them that are pertinent to the contemporary context. *The Possibility of an Island* is the first program in a series of projects that Fundació Joan Miró's Espai 13 will dedicate to current curatorial practices, emphasizing not only the usual question of *what* is being curated, but also *how*.

## Activities

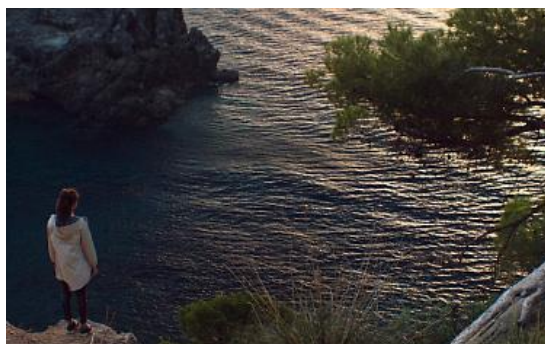
Guided tour by the artist and curator on the day of the inauguration, at 6:30 p.m.

## Upcoming exhibitions in *The Possibility of an Island*

### **Bárbara Sánchez Barroso. *The Odyssey***

03/23/2018 — 06/17/2018 pm.

Beginning with the notion of voyages as a metaphor for the search for oneself, Bárbara Sánchez Barroso revisits the Odysseus myth with the aim of stripping it of all things epic or heroic and relates it to a journey that she herself undertakes by sea to retrace her own origins. In the work, Sánchez Barroso explores the intersections between fiction and biographical narrative, between literature and life.



### **Gideonsson/Londré. *I'm Vertical***

June 29, 2018 — September 11, 2018

This Swedish artistic duo's work often has a performative dimension and is based on the exploration of issues related to temporality, bodies, and natural space, as well as the relationships between them. For Espai 13, they are preparing a project that explores the idea of verticality and the effects, both physical and psychological, that human beings experience at very high altitudes and how this set of sensations enhances physical and mental states of introspection. They also relate these effects to the ascetic tradition and to certain forms of spirituality that have historically developed in alpine regions and called for a life of isolation and seclusion.



Images and material for the press are available at [www.fmirobcn.org/press](http://www.fmirobcn.org/press) and <http://bit.ly/2tqjyFs>. Follow Espai 13's activities on social media with the hashtag #illaEspai13.

In collaboration with

**B Sabadell**  
Fundació

**Fundació Joan Miró** \* J... Barcelona

Fundació Joan Miró  
Parc de Montjuïc  
08038 Barcelona  
T +34 934 439 070  
[press@fmirobcn.org](mailto:press@fmirobcn.org)